



HERE'S WHY  
IT'S A PERFECT FIT

## LOCATION

Our building couldn't be located in a better spot. It's right downtown, where everyone from Burlington will see it regularly. It's also adjacent to plenty of free parking.



## GREAT "BONES"



It needs renovations, but the potential is amazing. It's a beautiful blank slate that's built like a tank, with concrete flooring, huge wooden beams, and brick walls.

## THE VISION

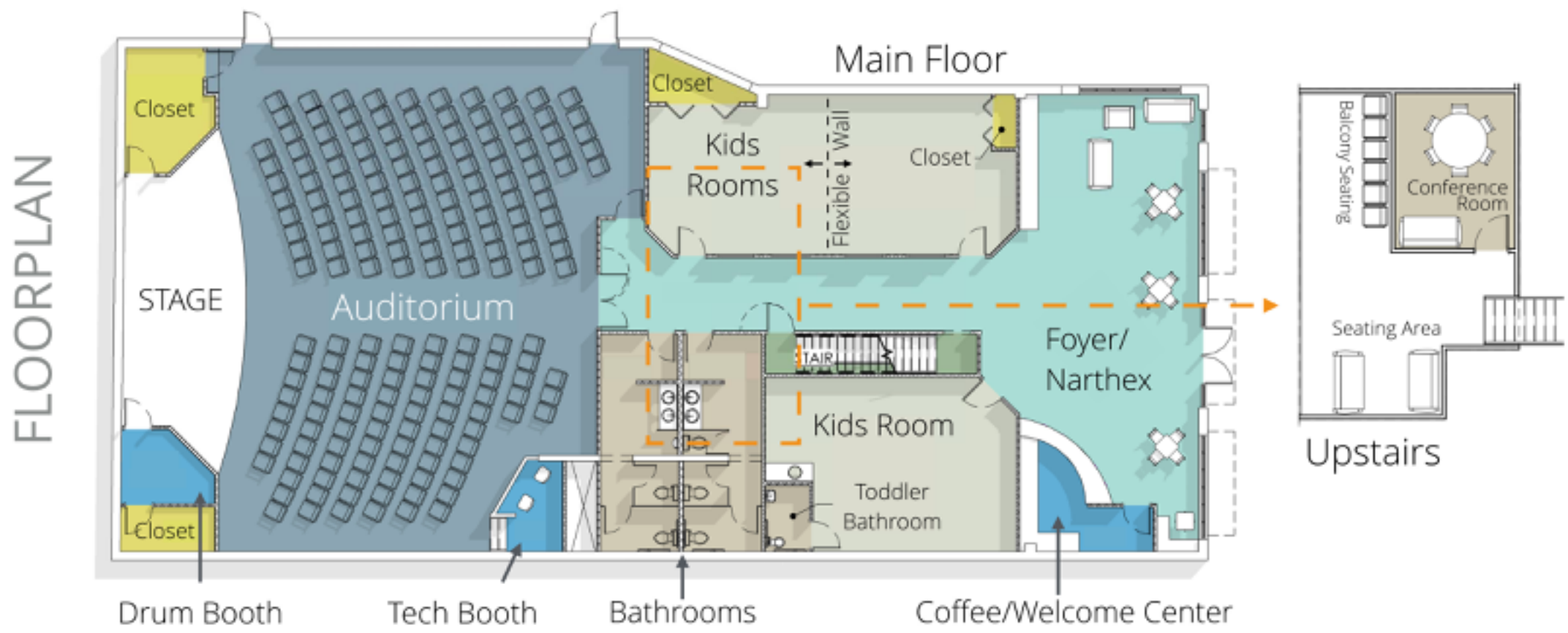
This building is a tremendous opportunity for our church to **BRING RESTORATION** by bringing an old building back to life, to **BUILD TRUST** by putting down roots, and to **MAKE SPACE** for our continued growth.



FOR MORE INFO, TURN OVER. FOR **EVEN MORE** INFO, VISIT  
OUR WEBSITE AT [lifebridge.church/building](https://lifebridge.church/building)



THE BUILDING



ESTIMATED  
CAPACITY  
270 PEOPLE

ESTIMATED RENOVATIONS  
COST  
\$500,000

ESTIMATED  
MOVE-IN DATE  
SUMMER 2017

REMAINING  
NEED  
\$50,000

PLEASE HELP us start construction before the end of 2016. Your gift is tax-deductible.

MAIL TO: PO Box 28,  
Burlington, WI 53015



ONLINE:  
[lifebridge.church/give](http://lifebridge.church/give)